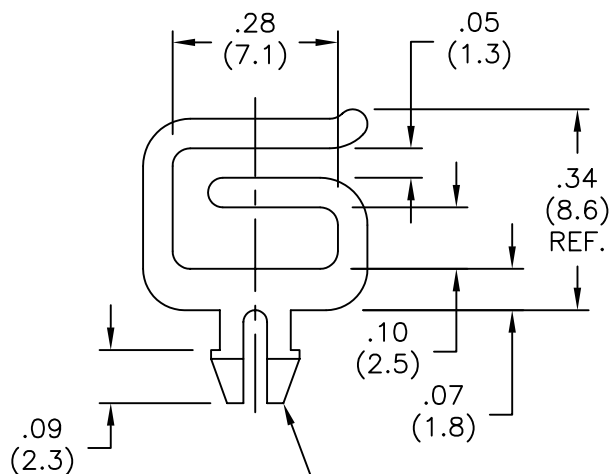
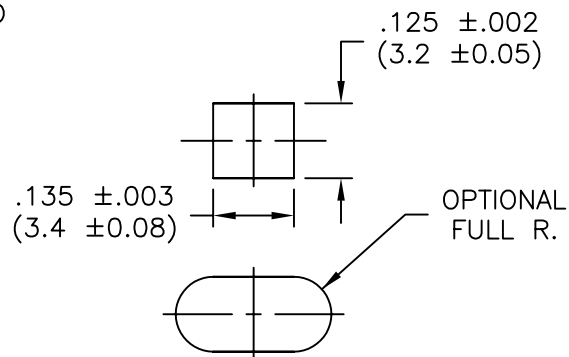
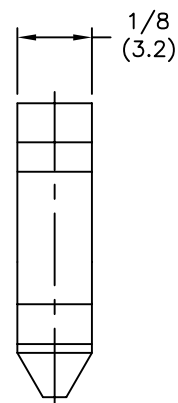
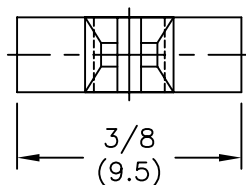


AVAILABLE BY SPECIAL ORDER ONLY



SEE RECOMMENDED MOUNTING HOLE



RECOMMENDED MOUNTING HOLE IN .064 MAXIMUM THICK PANEL/CHASSIS.

NYLON 6/6
(RMS-01)
COLOR: NATURAL
PART NO.

FLAME RETARDANT
NYLON (RMS-19)
COLOR: NATURAL
PART NO.

MOFNSP-2-01

MOFNSP-2-19

NOTES:

1. MATERIAL NYLON 66 (RMS-01)
FLAME RETARDANT NYLON (RMS-19)
2. COLOR: NATURAL

TITLE: MINI OPTICAL FIBER NETWORK SADDLE, 2 PRONG				DWG IN IN (MM)		FINAL			
TOLERANCES UNLESS NOTED .XX=±.010 .XXX=±.005 FRAC=±1/64 ANG=±1°		FILE # MOFNSP-2	DWN: S.M	APP:		PART #		PRINT TYPE	
REV		MAT'L: SEE NOTES	DT: 11/08/00	DT:		SEE TABLE		CA	
A SEE CO 200035 FOR CHANGES		RE: RICHCO, INC.	RICHCO INC. PO BOX 804238, CHICAGO, 60680 (773) 539-4060						
SK 09.26.07	ENGR DATE								

REV	DESCRIPTION	SK 09.26.07	ENGR DATE
A	SEE CO 200035 FOR CHANGES		